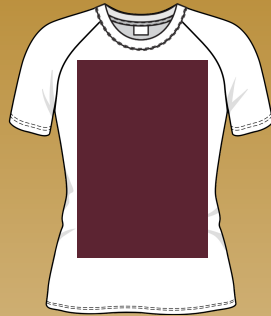




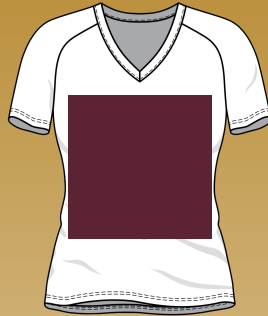
Garment Design Sizing Guide



Unisex: 12"x14"



Ladies: 9"x12"



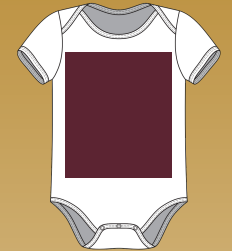
V-Neck: 12"x12"



Long Sleeve: 3"x12"



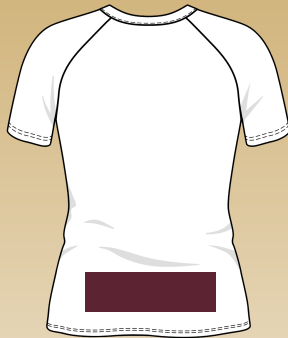
Youth: 12"x12"



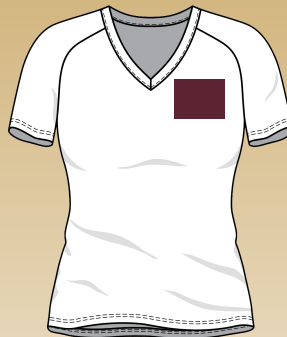
Infant: 5.5"x6"



Left Chest: 3.5"x4"



Lower Back: 12"w



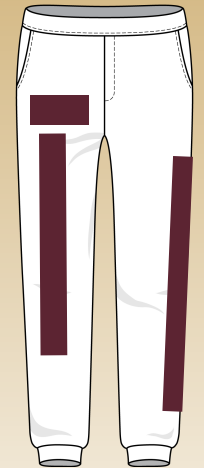
L/C V-Neck: 3.5"x3"



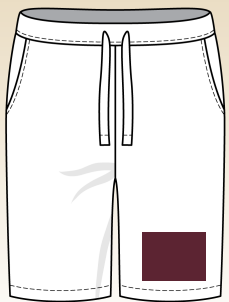
Short Sleeve:
3.75"x3.75"



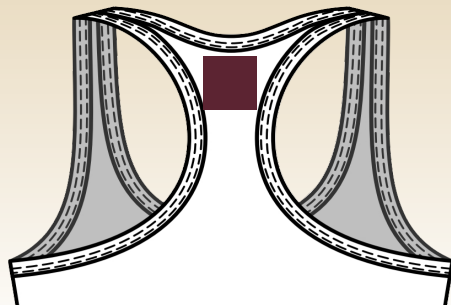
Pull Over: 8.75"x12"



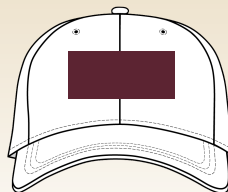
Hip: 3.75"w
Leg/Side: 4"x20"



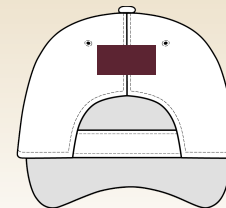
Shorts: 3.75"w



High Back: 2.5"w



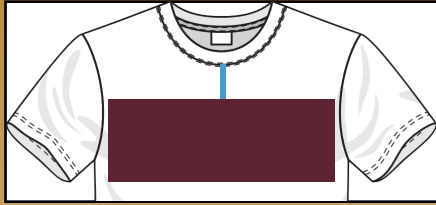
Hat Front: 2.25'x4"



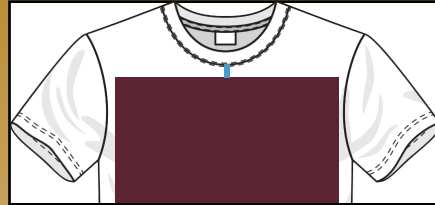
Hat Back: 4"w



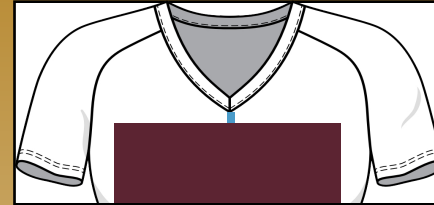
Garment Design Standard Placement



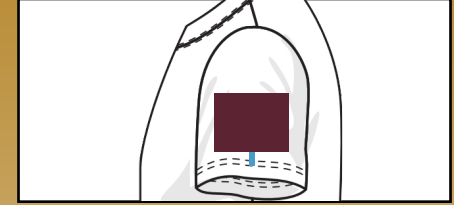
Center Chest: 3" down from bottom of collar



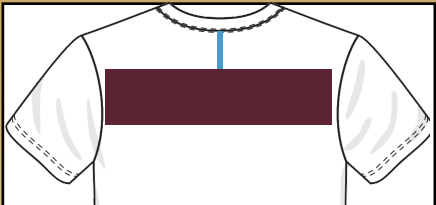
Full Front: 2" down from bottom of collar



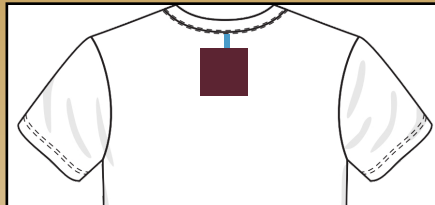
V-Neck: 1" down from bottom of collar



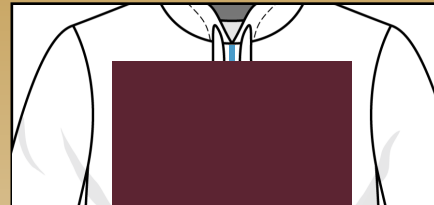
Sleeve: 0.75" up from top of seam



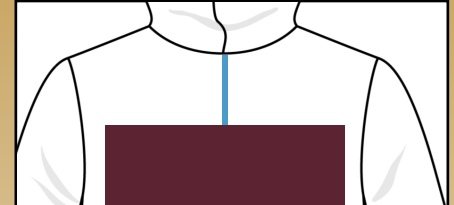
Upper Back: 3" down from bottom of collar



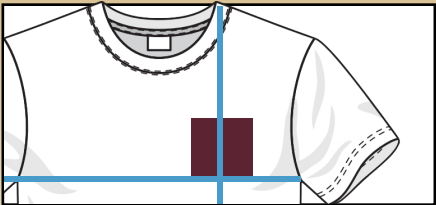
High Back: 1" down from bottom of collar



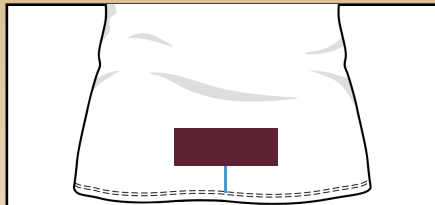
Pull Over Front: 1" down from bottom of collar



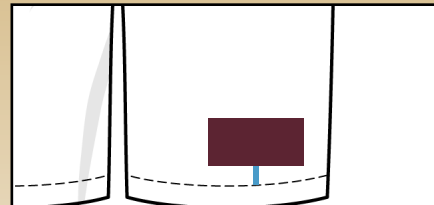
Hooded Back: 6" down from bottom of collar



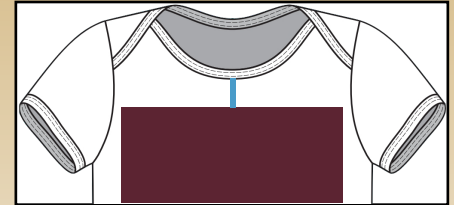
Left Chest: centered on collar corner and set on bottom sleeve seam, per size



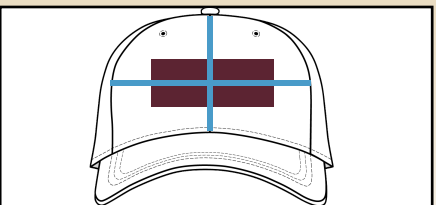
Lower Back: 3" up from top of seam



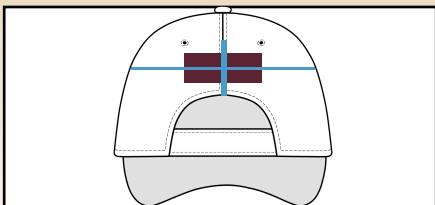
Shorts Leg: 0.75" up from top of seam



Infant Front: 2" down from bottom of collar



Hat Front: centered in panel(s)



Hat Back: centered in panel(s)

While every attempt is made to ensure the placement of your design is accurate, garments are printed or embroidered by hand, on a movable, stretchable surface and could shift slightly up to a half inch (0.5") in any direction.